

SHINAGAWA SHOKO

DIP-MOLDED PRODUCT

Outline of dip-molded product	92 · 93
■ Insulation cover	
● Connect sleeve	
For plug 5-mm diameter series	94
For receptacle 5-mm diameter series	94
For straight-type receptacle 110/187 series	95
For straight-type receptacle 205/250/00 series	96
For flag-type receptacle 110/187/205/250 series	97
● TCV cap	TCV series
	98
● TCM cap	TCM series
	99
● VCC cap	VCC series
	100
● Earth terminal cap	ETC-40
	101
● Spare tab cap	STC series
	101
● Board-in sleeve	102
● VCP cap	VCP series
	103
● Capacitor cover	Round-type/post-fit-type series
	104
	Square-type/tubular-type series
	105
● Fuse cover	106
● Switch cover	107
● Coupler cover	108 · 109
● Dust cover	DC series
	110
● Dust cover (for D-sub)	P/R series
	111
● Flat cable cover	112
● Insulation cover for bus bar	IC/BS series
	112
● Shield cap	113
	Straight type
	114
	Two-pronged type
	114 · 115
	Two-pronged type (for housing)
	115
■ Wire bundle	
● Coated clip	CP series
	116
● Coated clip (PB free)	CS/CA series
	117
	CP-SA/CS-A series
	118

DIP-MOLDED PRODUCT

We manufacture various cap, cover etc through the dip-molded process with the material of soft PVC sol compound that we developed originally. The dip-molded product made of these material is excellent in insulation property and has been recognized by UL standard. Also, our dip-molded product do not contain either Cadmium or Pb.

Features of dip-molded product

- Excellent electrical and anti heat-aging resistance.
- Flexible to allow fitting to electronic components, terminals and wire.
- Since no pressure is used in manufacture, there is no internal distortion of dip-molded product and no heat-aging distortion.
- The metal molds are inexpensive and can quickly manufacture product.
- Excellent surface gloss, and has a wide Color Variations.

Recognition by industrial standards

● The Japan Electrical Appliance and Material Control Law	Registered	Dip material	Max. usable temp.
	042GAC0435	SS107UFTT	105°C
	042GAC0394	SS107UFTC	100°C
● Material recognized by Underwriters Laboratories (UL)	UL File No.	Dip material	
	E58538	SS107UFTT SS107UFTC S-flex E-0 S-flex E-10 S-flex E-20	
● Product recognized by Underwriters Laboratories (UL)	UL File No.	Rating	
	E55167	105°C— 300V, 600V	
● Product recognized by CSA	CSA File No.	Rating	
	LR52853 · LR52854	90°C— 300V, 600V 105°C— 300V, 600V	

Specifications of Dip Materials

Test item	Unit	Standard material	Materials recognized by UL					Test method
		General type	Heat-aging resistant and incombustible applications		High-insulation and high-heat-deformation applications			
		SS108	SS107 UFTT	SS107 UFTC	S-flex E-0	S-flex E-10	S-flex E-20	
Specific gravity	—	1.2 ~ 1.3	1.2 ~ 1.3	1.2 ~ 1.3	1.2 ~ 1.3	1.2 ~ 1.3	1.2 ~ 1.3	JIS K7112
Hardness (A-type)	—	67±3	77±3	83±3	86±3	93±3	96±3	JIS K6301
Tensile strength	MPa	11.7 ~ 15.6	14.7 ~ 19.6	13.7 ~ 17.6	13.7 ~ 17.6	15.7 ~ 21.5	17.6 ~ 23.5	JIS K6723
Tensile strength after aging (100°C × 120 h)	MPa	13.7 ~ 19.6	14.7 ~ 19.6	13.7 ~ 17.6	13.7 ~ 17.6	15.7 ~ 21.5	17.6 ~ 23.5	
Elongation	%	300 ~ 400	300 ~ 400	300 ~ 400	300 ~ 400	200 ~ 300	150 ~ 250	
Elongation after aging (100°C × 120 h)	%	300 ~ 350	300 ~ 400	300 ~ 400	300 ~ 400	200 ~ 300	150 ~ 250	JIS K6911 (in air)
Insulation	KV	5 ~ 8	7 ~ 10	7 ~ 10	14 ~ 17	16 ~ 20	18 ~ 24	
Insulation after aging (100°C × 120 h)	KV	5 ~ 8	7 ~ 10	7 ~ 10	14 ~ 17	16 ~ 20	18 ~ 24	JIS K6723
Volume resistivity	Ω · cm	10 ⁹ ~ 10 ¹⁰	10 ¹⁰ ~ 10 ¹¹	10 ¹⁰ ~ 10 ¹¹	10 ¹¹ ~ 10 ¹²	10 ¹¹ ~ 10 ¹²	10 ¹² ~ 10 ¹³	JIS K6723
Continuous use temperature	°C	60	85	100	—	—	—	IEC pub-216
Heat deformation temperature	°C	120	130	135	155	190	200	Loop test
Cold resistance (Tf)	°C	— 40	— 40	— 40	—	—	—	JIS K6723
Combustibility	—	—	UL94V-0	UL94V-0	UL94V-0	UL94V-0	UL94V-0	UL94
Copper stability	—	Outstanding	Outstanding	Outstanding	Outstanding	Outstanding	Outstanding	UL224
Weatherproof qualities (excluding transparent product)	—	Very good	Very good	Very good	Very good	Very good	Very good	
Ozone resistance	—	Very good	Very good	Very good	Very good	Very good	Very good	
Chemical resistance	Acids	—	Outstanding	Outstanding	Outstanding	Outstanding	Outstanding	JIS K7114
	Alkalis	—	Outstanding	Outstanding	Outstanding	Outstanding	Outstanding	
Note Non-migration	—	Good	Good	Good	Good	Good	Good	

Note: Please conduct anti-styrene tests before using.

- This data should only be used as a guide for general applications.
- Flame retardant dip material SS107UF (UL94V-0) is also available.
- No substances classified as ozone layer depleting substances (Classes I and II) under Article 611 of the U.S. Clean Air Act are used as the dip materials, or used in the manufacturing process or in the packaging of dip-molded product.

UL RECOGNIZED

UL YELLOW CARD

QMFZ2 February 13, 2003
Plastics - Component
SHINAGAWA SHOKO CO LTD
7-22 HIGASHI-KOBIYA 4-CHOME OHTA-KU, TOKYO 144-
0033 JAPAN E58538

Material Desg	Color	Min TIA mm	Flare Claw	H W	H A	Die	RTI		H V	D T	C U
							Temp	Str			
Polymethyl Methacrylate (PMMA), furnished as molded parts or parts.											
Emagous SD	BL	0.6	54	—	—	50	50	50	—	—	—
		0.7	54	—	—	50	50	50	—	—	—
Polyvinylchloride (PVC), furnished as parts, molded parts.											
S-FLEX E-C	ALL	0.75	54	—	—	50	50	50	—	—	—
		0.91	54	1	4	50	50	50	—	—	—
		1.0	54	1	5	50	50	50	2	7	II
S-FLEX E-10	ALL	0.75	54	1	3	50	50	50	—	—	—
		0.91	54	1	3	50	50	50	—	—	—
		0.5	54	1	2	50	50	50	2	7	II
S-FLEX E-20	ALL	0.75	54	1	3	50	50	50	—	—	—
		0.91	54	1	3	50	50	50	—	—	—

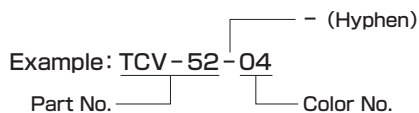
10/8/2003 Underwriters Laboratories Inc. Card 1 of 3

QMFZ2 February 13, 2003
Plastics - Component
SHINAGAWA SHOKO CO LTD E58538

Material Desg	Color	Min. Dia mm	Flare Class	H W	H A	Die	RTI		H V	D T	C U
							Temp	Str			
Marking. Company name and material designation on container, wrapper or finished part.											
See General Information Preceding These Recognitions											
UL 84 small-scale test data does not pertain to building materials, furnishings, and related											

10/8/2003 Underwriters Laboratories Inc. Card 2 of 3

● Color code of dip-molded product



● Color code

DIP-MOLDED MATERIAL	COLOR	RED	WHITE	BLUE	BLACK	YELLOW	GREEN	BROWN	GRAY	TRANS PARENT
General type SS108		01	02	03	04	05	06	07	08	09
UL recognized Material (Opacity)SS107UFTC	Color Code	11	12	13	14	15	16	17	18	—
UL recognized Material (Colored transparency)SS107UFTT		21	22	23	24	25	26	27	28	—
UL recognized Material (Opacity)SS107UFTT		—	32	—	34	—	—	—	—	—
UL recognized Material (Colored transparency)SS107UF		—	—	—	—	45	—	—	—	—

Cantion on the use of dip-molded product

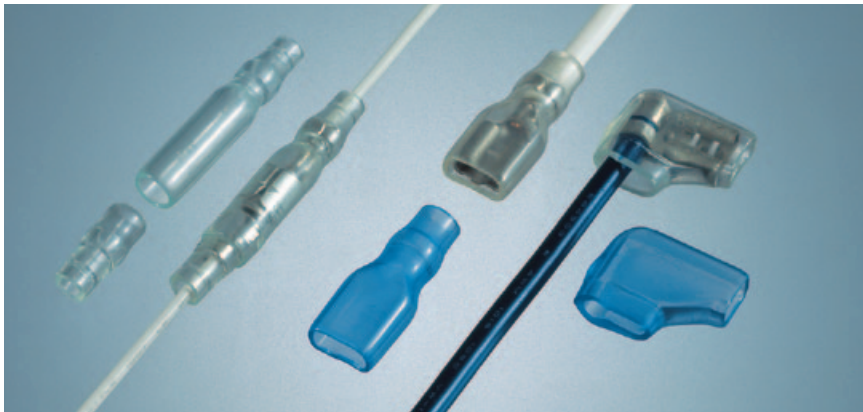
- Shall be used under the continuous use temperature designated in the spec of dip materials chart. Recognized product to be used under rated temperature.
- Avoid the use under hi-humidity or water as it deteriorates the electric property.
- Avoid the use in mineral or vegetable oil as it deteriorates the mechanical property.
- Avoid the use in organic solvent as it softens the product and deteriorates the mechanical property.
- Shall be used after the test upon its use with the styrene contained product.
- Though transparent product possibly deteriorates its transparency after a while, it does not affect the function of the product.

※ Contact us for any queries.

Connector sleeve



φ5/110/187/205/250/00 series



Feature

- For SURE plug and its receptacle, and Straight/Flag type terminal.

Material

Soft PVC
 Standard material: SS108
 UL recognized material
 (File No. E58538): SS107UFTT

Standard color

SS108: Transparent (09)
 SS107UFTT: Blue transparent (23)



UL recognized product E55167

Cat. No. 10, 11, 16
 SS107UFTT..... Rating: 105°C, 600V



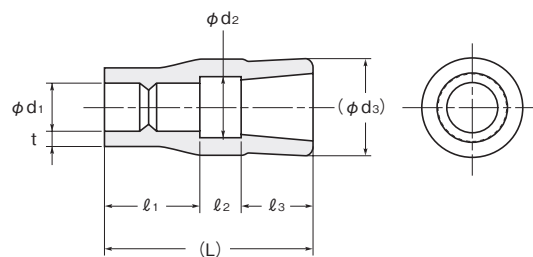
CSA recognized product LR52853 • LR52854

Cat. No. 11, 16 SS107UFTT..... Rating: 105°C, 600V
 Cat. No. 10 SS107UFTT..... Rating: 90°C, 600V

Classification

Part No.	Type
22 □□□□	Round connector sleeve (for SURE plug)
21 □□□□	Round connector sleeve (for receptacle)
23 □□□□	Straight connector sleeve (for straight-type receptacle)
24 □□□□	Flag connector sleeve (for flag-type receptacle)
25 □□□□	Post-fit connector sleeve (for flag-type receptacle)

φ5 series

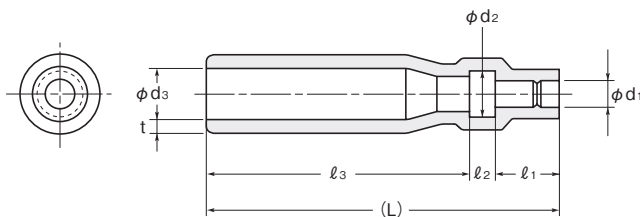


Cat. No.10

Part No.	Dimensions (mm)							ID No.	Packing unit (pieces)
	φ d ₁	φ d ₂	(φ d ₃)	l ₁ ± 1	l ₂	l ₃ ± 1	(L)		
※ 224222	2.2	4.5	5	7	2.5	4.5	14	1.0	1,000
224225	2.5	4.0		6			13		
224228	2.8	4.5		7			14		
224230	3.0	4.0		6			13		
224232	3.2	4.5		7			14		
224235	3.5	4.5		6			13		
224240	4.0	4.5		6			13		

※ Order-made (Contact us for production volume.)

φ 5 series



Cat. No.10

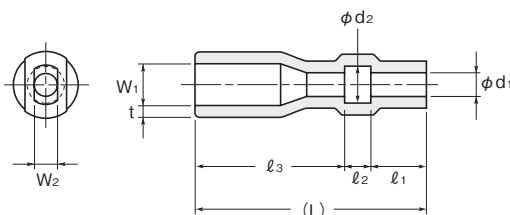
Part No.	Dimensions (mm)								ID No.	Packing unit (pieces)
	φ d ₁	φ d ₂	(φ d ₃)	l ₁ ± 1	l ₂	l ₃ ± 1	(L)	t ^{+0.3} / _{-0.2}		
215025	2.5	4.5	5	6	2.5	4.5	33	1.0	S 9	1,000
※ 215028	2.8	4.5		6					S10	
215030	3.0	4.5		6					S11	
215032	3.2	4.5		7					S12	
215035	3.5	4.0		6					S13	
215040	4.0	5.0		6					S14	

※ Order-made (Contact us for production volume.)

For straight-type receptacle 110/187 series



110 series

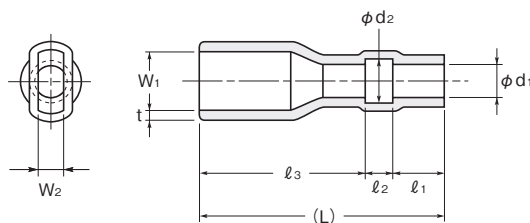


Cat. No.11

Part No.	Dimensions (mm)									ID No.	Packing unit (pieces)				
	φ d ₁	φ d ₂	l ₁ ± 1	l ₂	l ₃ ± 1	(L)	W ₁	W ₂	t ^{+0.3} / _{-0.2}						
234015	1.5	3.0	5	2.5	15.5	23	4.0	2.0	0.8	S16	1,000				
※ 234016	1.6	2.8	3							12.5		18	2.1	1.0	S17
234018	1.8	3.3	5							13.5		21	2.1	1.0	S18
234020	2.0	3.5	5							15.5		23	2.0	0.8	S19
234025	2.5	3.5	5							15.5		23	2.0	0.8	S20
234028	2.8	4.3	5							13.5		21	2.1	1.0	S21
234030	3.0	3.8	5							15.5		23	2.0	0.8	S22
234035	3.5	4.5	5							15.5		23	2.0	0.8	S23

※ Order-made (Contact us for production volume.)

187 series



Cat. No.11

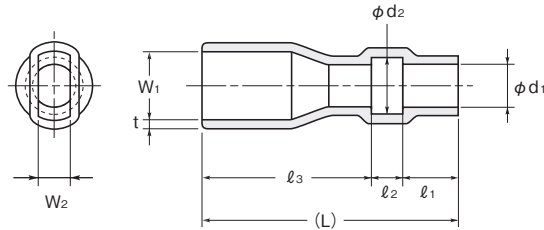
Part No.	Dimensions (mm)									ID No.	Packing unit (pieces)		
	φ d ₁	φ d ₂	l ₁ ± 1	l ₂	l ₃ ± 1	(L)	W ₁	W ₂	t ^{+0.3} / _{-0.2}				
※ 235815	1.5	3.0	5	3.0	15.0	23	5.8	2.2	0.8	S26	1,000		
※ 235818	1.8	3.3		2.5						15.5		1.0	S27
235820	2.0	3.5		2.5						15.5		0.8	S28
※ 235822	2.2	3.7		2.5						15.5		1.0	S29
235825	2.5	3.5		2.5						15.5		0.8	S30
235830	3.0	4.0		2.5						15.5		0.8	S31
235835	3.5	4.5		3.0						15.0		0.8	S32
235840	4.0	5.0		3.0						15.0		0.8	S33
235845	4.5	5.5		3.0						15.0		0.8	S34

※ Order-made (Contact us for production volume.)

For straight-type receptacle **205/250/00** series



205 series

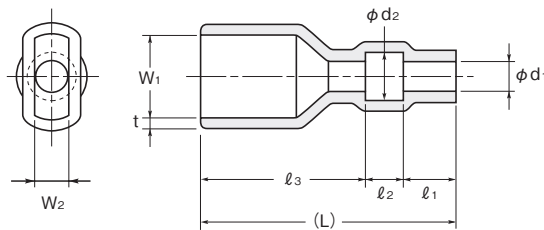


Cat. No.11

Part No.	Dimensions (mm)									ID No.	Packing unit (pieces)
	ϕd_1	ϕd_2	$l_1 \pm 1$	l_2	$l_3 \pm 1$	(L)	W_1	W_2	$t^{+0.3}_{-0.2}$		
236520	2.0	3.5	5	3.0	16	24	6.5	3.0	0.9	S36	1,000
236525	2.5	3.5								S37	
236530	3.0	4.0								S38	
236535	3.5	4.5								S39	
236540	4.0	5.0								S40	
※ 236548	4.8	6.0								S41	

※ Order-made (Contact us for production volume.)

250 series



Cat. No.11

Part No.	Dimensions (mm)									ID No.	Packing unit (pieces)
	ϕd_1	ϕd_2	$l_1 \pm 1$	l_2	$l_3 \pm 1$	(L)	W_1	W_2	$t^{+0.3}_{-0.2}$		
238020	2.0	3.2	5	3.0	16.0	24.0	8.0	3.5	1.0	S43	1,000
238025	2.5	4.5		3.0	16.0	24.0				S44	
238030	3.0	4.5		3.5	15.5	24.0				S45	
238032	3.2	4.7		2.5	16.5	24.0				S46	
238035	3.5	4.5		3.0	16.0	24.0				S47	
238038	3.8	5.3		2.5	17.5	25.0				S48	
238040	4.0	5.0		3.0	16.5	24.5				S49	
238048	4.8	6.3		2.5	17.5	25.0				S50	
238060	6.0	7.5		2.5	19.5	27.0				S51	

00 series

Fig.1

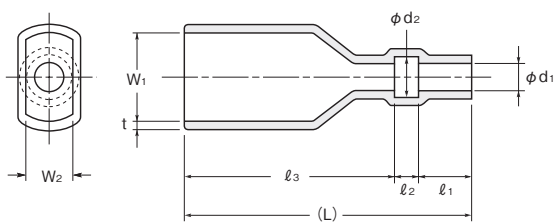
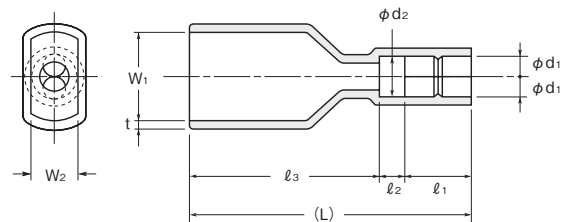


Fig.2



Part No.	Dimensions (mm)									Fig.	ID No.	Packing unit (pieces)
	ϕd_1	ϕd_2	W_1	W_2	$l_1 \pm 1$	l_2	$l_3 \pm 1$	(L)	$t^{+0.3}_{-0.2}$			
※ 230032	3.2	4.5	11.6	5.6	5	2.5	28.0	35.5	1.0	1	S71	1,000
※ 230035	3.5	4.5			5						S72	
※ 230025W	2.5	5.0			7						25.5	

※ Order-made (Contact us for production volume.)

INSULATION SLEEVE FOR TERMINAL
CIRCUIT BOARD ACCESSORY
WIRING CLAMP
WIRING PROTECTOR
FASTENER
DIP-MOLDED PRODUCT

For flag-type receptacle **110/187/205/250** series



INSULATION SLEEVE
FOR TERMINAL

CIRCUIT BOARD ACCESSORY

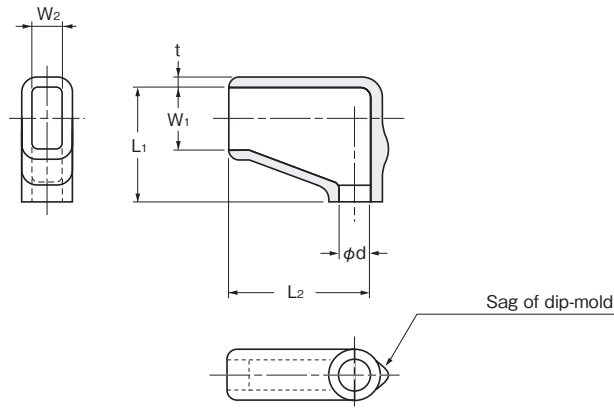
WIRING CLAMP

WIRING PROTECTOR

FASTENER

DIP-MOLDED PRODUCT

Pre-fit flag-type series

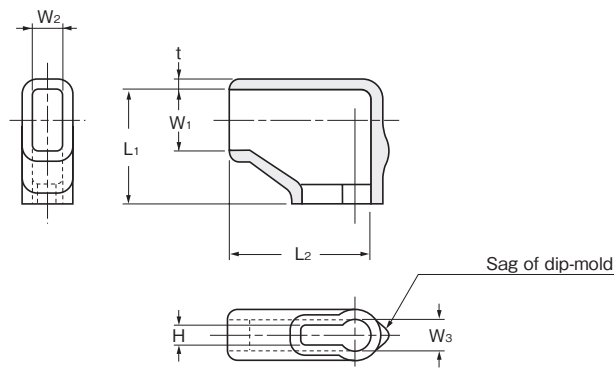


Cat. No.16

Terminal type	Part No.	Dimensions (mm)						ID No.	Packing unit (pieces)
		ϕd_1	$L_1 \pm 1$	$L_2 \pm 1$	W_1	W_2	$t^{+0.3}_{-0.2}$		
※ 110	244535	3.5	13.5	12.0	4.5	2.5	1.0	S53	1,000
187	246225	2.5	11.5	14.0	6.2	3.0		S54	
	246230	3.0						S55	
	246232	3.2						S56	
	248525	2.5						13.5	
248530	3.0	S62							
248532	3.2	S63							
248540	4.0	S64							
248548	4.8	S65							
248550	5.0	S66							

※ Order-made (Contact us for production volume.)

Post-fit flag-type series



Cat. No.16

Terminal type	Part No.	Dimensions (mm)						ID No.	Packing unit (pieces)	
		$L_1 \pm 1$	$L_2 \pm 1$	W_1	W_2	$t^{+0.3}_{-0.2}$	H			W_3
187	250187	11.5	13.0	5.0	2.9	1.0	2.0	3.2	S91	1,000
※ 205	250205	12.5	14.0	5.5	3.2				S93	
250	250250	14.0	16.5	6.5	3.5				S92	

※ Order-made (Contact us for production volume.)

TCV cap

TCV series



Feature

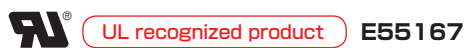
- Best suited for the insulation and color coding of the terminals nipped onto wire.
- Choice of nine colors.

Material

Soft PVC
 Standard material: SS108
 UL recognized material (E58538): SS107UFTT (order-made)
 SS107UFTC (order-made)

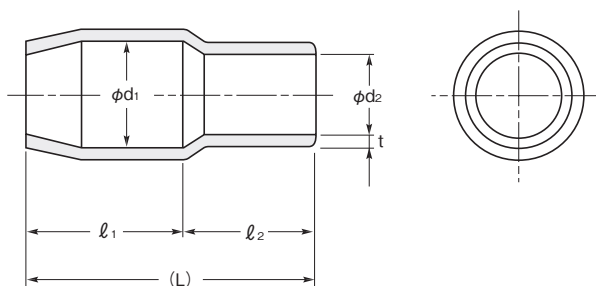
Standard color

SS108
 Red (01) White (02) Blue (03) Black (04) Yellow (05)
 Green (06) Brown (07) Gray (08) Transparent (09)



Cat. No. 21

SS107UFTT Rating: 105°C, 600V
 SS107UFTC Rating: 105°C, 600V



Cat. No. 21

Part No.	Applicable (mm ²)	Dimensions (mm)						Packing unit (pieces)
		ϕd_1	ϕd_2	l_1	l_2	(L)	t	
TCV- 10	0.3	3.1	2.0	6 \pm 0.7	7 \pm 0.7	13	0.6 $^{+0.3}_{-0.2}$	100×10 = 1,000
TCV- 12	0.5 ~ 1.25	3.3	3.1	6 \pm 0.7	7 \pm 0.7	13	0.6 $^{+0.3}_{-0.2}$	
TCV- 21	2.0	4.5	3.7	7 \pm 0.7	7 \pm 0.7	14	0.7 $^{+0.3}_{-0.2}$	
TCV- 52	3.5	5.7	4.1	9 \pm 0.7	8 \pm 0.7	17	0.8 $^{+0.3}_{-0.2}$	
TCV- 53	5.5	5.7	5.2	9 \pm 0.7	8 \pm 0.7	17	0.8 $^{+0.3}_{-0.2}$	
TCV- 81	8.0	7.2	6.2	10 \pm 0.7	9 \pm 0.7	19	1.0 $^{+0.3}_{-0.2}$	100×5 = 500
TCV- 141	14	10.0	8.0	13 \pm 1.0	11 \pm 1.0	24	1.1 \pm 0.3	
TCV- 221	22	12.0	9.5	15 \pm 1.0	14 \pm 1.0	29	1.2 \pm 0.3	
TCV- 381	38	14.0	11.8	17 \pm 1.0	16 \pm 1.0	33	1.4 \pm 0.3	50×5 = 250
TCV- 601	60	17.0	13.9	20 \pm 1.0	19 \pm 1.0	39	1.5 \pm 0.3	
TCV- 801	80	19.5	16.0	25 \pm 1.5	21 \pm 1.5	46	1.5 \pm 0.3	20×5 = 100
TCV-1001	100	22.0	18.0	30 \pm 1.5	24 \pm 1.5	54	1.7 \pm 0.3	
TCV-1251	125	24.4	20.0	32 \pm 1.5	25 \pm 1.5	57	1.8 \pm 0.4	
TCV-1501	150	24.4	22.0	34 \pm 1.5	31 \pm 1.5	65	1.8 \pm 0.4	10×5 = 50
TCV-2001	200	32.2	24.0	38 \pm 1.5	31 \pm 1.5	69	2.0 \pm 0.4	
TCV-2501	250	37.5	26.5	42 \pm 1.5	33 \pm 1.5	75	2.0 \pm 0.4	
TCV-3251	325	37.5	30.0	42 \pm 1.5	33 \pm 1.5	75	2.0 \pm 0.4	



TCM cap

TCM series



Feature

- Excellent in anti-heat aging and flame-retardant.
- Best suited for color-coding.

Material

Soft PVC
UL recognized material (E58538): SS107UFTC

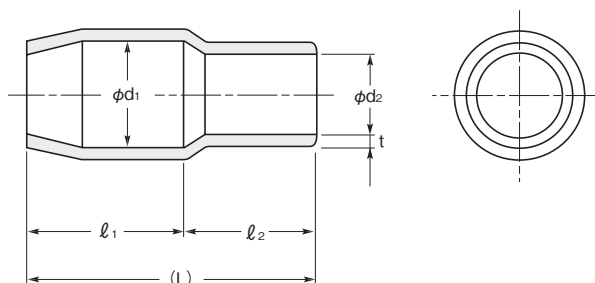
Standard color

Red (11) White (12) Blue (13) Black (14) Yellow (15) Green (16)



UL recognized product **E55167**

Cat. No. 21 Rating: 105°C, 600V



Cat. No. 21

Part No.	Applicable (mm ²)	Dimensions (mm)						Packing unit (pieces)
		ϕd_1	ϕd_2	$l_1 \pm 1$	$l_2 \pm 1$	(L)	t	
TCM- 12	0.75	3.8	3.5	7	7	14	0.8	1,000
TCM- 21	2.0	4.4	4.1	7	7	14	0.8	
TCM- 52	3.5	5.0	4.7	9	8	17	0.8	
TCM- 53	5.5	5.7	5.4	9	8	17	0.8	
TCM- 81	8.0	7.2	6.0	10	9	19	1.0	
TCM- 141	14	10.0	7.4	13	11	24	1.1	500
TCM- 221	22	12.0	9.8	15	14	29	1.2	250
TCM- 381	38	14.0	12.0	17	16	33	1.5	
TCM- 601	60	17.0	15.0	20	19	39	1.5	
TCM- 801	80	19.0	17.0	25	21	46	1.6	100
TCM-1001	100	22.0	20.0	30	24	54	1.7	
TCM-1501	150	28.0	26.0	34	31	65	1.8	50

The green of TCM-801, -1001, 1501(16) is order-made. (Contact us for production volume.)

VCC cap

VCC series



Feature

- Insulation cap of spare terminals.
- Substitutes for the taping.

Material

Soft PVC
 Standard material: SS108
 UL recognized material (E58538):
 SS107UFTT
 SS107UFTC (order-made)

Standard color

SS108: Black (04) Transparent (09)
 SS107UFTT: Blue Transparent (23)



UL recognized product E55167

Cat. No. 20

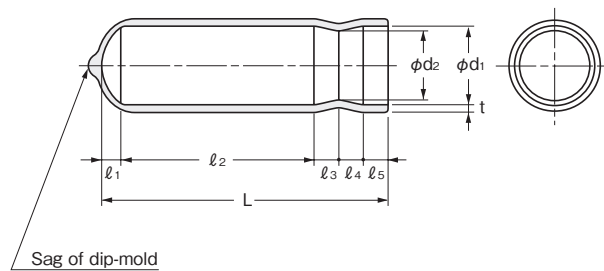
SS107UFTT..... Rating: 105°C, 600V
 SS107UFTC Rating: 105°C, 600V



CSA recognized product LR52853 • LR52854

Cat. No. 20

SS107UFTT..... Rating: 90°C, 300V
 SS107UFTC Rating: 105°C, 300V



Cat. No. 20

Part No.	Dimensions (mm)									Packing unit (pieces)
	ϕd_1	ϕd_2	l_1	l_2	l_3	l_4	l_5	(L)	$t_{-0.2}^{+0.3}$	
VCC- 1	10.0	8.5	3.0	21.0	3.0	3.0	3.0	33	1.0	1,000
VCC- 2	12.0	10.0	4.0	27.0	4.5	4.5	4.0	44	1.0	
VCC- 3	16.0	14.0	4.0	39.0	5.0	5.0	5.0	58	1.2	500
VCC- 4	20.0	17.0	6.0	49.0	5.0	5.0	5.0	70	1.2	
VCC- 5	24.0	22.0	7.0	48.0	5.0	5.0	5.0	70	1.5	250
VCC- 6	29.0	27.0	7.0	48.0	5.0	5.0	5.0	70	1.5	
VCC- 7	32.0	27.0	13.5	41.5	5.0	5.0	5.0	70	1.5	100
VCC- 8	40.0	35.0	20.0	46.0	4.5	4.5	5.0	80	1.5	
VCC- 9	6.0	3.5	2.0	18.0	5.0	5.0	3.0	33	0.8	1,000
VCC-10	8.0	6.0	3.0	17.0	5.0	5.0	3.0	33	0.8	
VCC-11	12.0	9.5	5.0	15.0	5.0	5.0	3.0	33	1.0	
VCC-12	14.0	12.0	3.5	31.5	4.5	5.0	4.5	49	1.0	

※ Order-made (Contact us for production volume.)

Earth terminal cap

ETC-40



Feature

- Excellent earth terminal cap in Anti-heat aging and flame-retardant.

Material

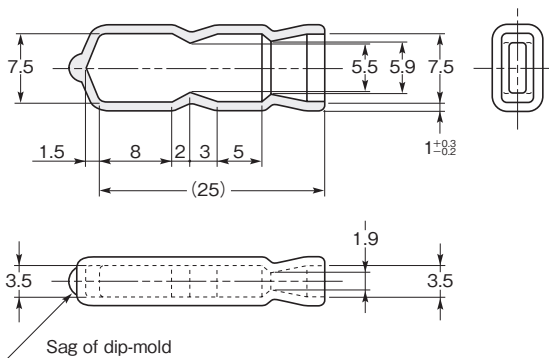
Soft PVC

UL recognized material (E58538): SS107UFTT

Standard color

Blue Transparent (23)

Part No.	Packing unit (pieces)
ETC-40	1,000



Spare tap cap

STC series



Feature

- For spare terminal tab, such as those found on tab-type breaker terminal blocks and other components that have tab terminals.
- STC-187 is for the 187 series, and also can be used for the 205 series.

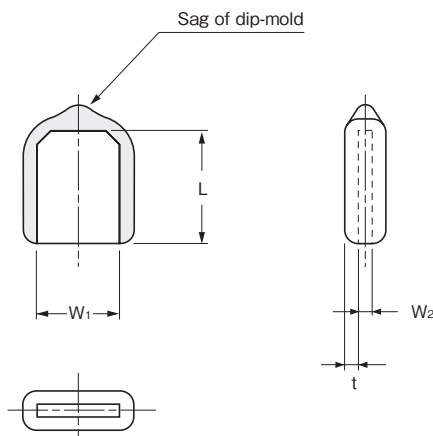
Material

Soft PVC

UL recognized material (E58538): SS107UFTT

Standard color

Blue Transparent (23)



Part No.	Dimensions (mm)				Packing unit (pieces)
	W ₁	W ₂	L ± 0.9	t ^{+0.3} / _{-0.2}	
※ STC-187	4.0	0.8	7.0	1.0	1,000
STC-250	6.1		8.3		

※ Order-made (Contact us for production volume.)



Board in-sleeve

Feature

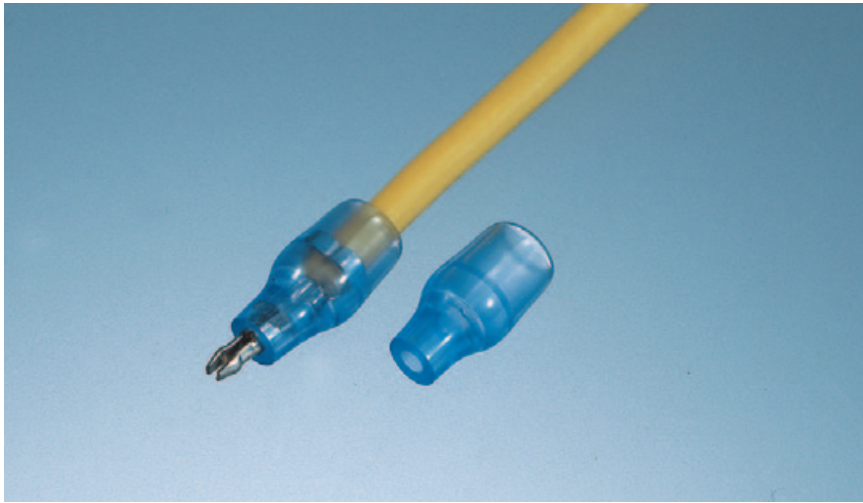
- For board-in connector.

Material

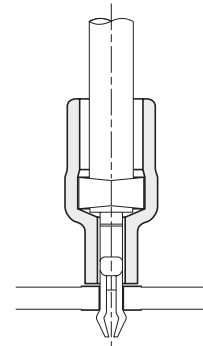
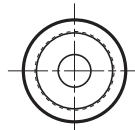
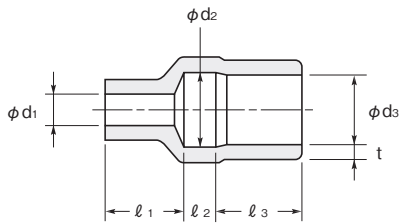
Soft PVC
 UL recognized material (E58538):
 SS107UFTT

Standard color

Blue Transparent (23)



Example of use



Part No.	Dimensions (mm)							Applicable terminals	Packing unit (pieces)
	ϕd_1	ϕd_2	ϕd_3	$l_1 \pm 1$	l_2	$l_3 \pm 0.7$	$t^{+0.3}_{-0.2}$		
※ 201618	1.6	2.0	1.8	0.4	1.8	5.0	0.7	SIN-002T-1.2N SIN-002T-1.0	1,000
201919	1.9	2.1	1.9	3.0	2.0	5.0	0.7	170072-1	
								SIN-01T-1.2	
								SIN-001T-1.8	
								SIN-01T-1.8N	
170197-1									
※ 201928	1.9	3.3	2.8	3.0	2.0	5.0	0.8	SIN-01T-1.2 SIN-001T-1.2	
201840	1.8	4.3	4.0	4.5	2.0	5.0	0.8	SIN-01T-1.8	
								SIN-01T-1.8N	
201840	1.8	4.3	4.0	4.5	2.0	5.0	0.8	SIN-21T-1.8	

※ Order-made (Contact us for production volume.)

INSULATION SLEEVE FOR TERMINAL

CIRCUIT BOARD ACCESSORY

WIRING CLAMP

WIRING PROTECTOR

FASTENER

DIP-MOLDED PRODUCT

VCP cap

VCP series



Feature

- Can be used for the insulation of electronic capacitors etc.
- Can be used for the protection of wire and cable from dust, moisture etc.
- Can be used for the protection of pipe screws from dust, moisture etc.

Material

Soft PVC

Standard material: SS108

UL recognized material (E58538): SS107UFTT (order-made)

SS107UFTC (order-made)

Standard color

SS108: Black (04)



UL recognized product E55167

Cat. No. 20

SS107UFTT..... Rating: 105°C, 600V

SS107UFTC..... Rating: 105°C, 600V

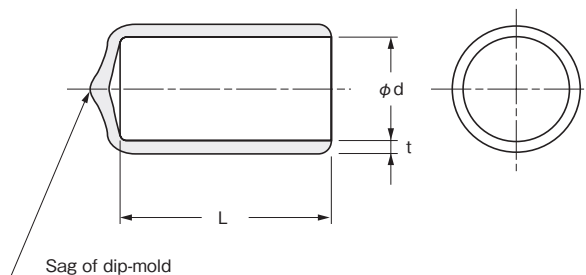


CSA recognized product LR52853 • LR52854

Cat. No. 20

SS107UFTT..... Rating: 90°C, 300V

SS107UFTC..... Rating: 105°C, 300V



Cat. No. 20

Part No.	Dimensions (mm)			Packing unit (pieces)
	φ d	L	t	
※ VCP- 1.4	1.4	10 ^{±1}	0.8 ^{±0.3}	1,000
※ VCP- 2	2			
※ VCP- 2.4	2.4			
※ VCP- 2.7	2.7			
※ VCP- 3.0	3			
※ VCP- 3.3	3.3			
※ VCP- 3.5	3.5			
※ VCP- 4	4			
※ VCP- 4.7	4.7			
※ VCP- 5	5			
※ VCP- 5.5	5.5			
※ VCP- 6	6			
※ VCP- 7.5	7.5			
※ VCP- 8	8			
※ VCP- 9	9	20 ^{±1}	1.5 ^{±0.4}	500
※ VCP-10	10			
※ VCP-12	12			
※ VCP-13	13			
※ VCP-14	14	30 ^{±1}	1.5 ^{±0.4}	500
※ VCP-15	15			
※ VCP-16	16			
※ VCP-18	18			
※ VCP-20	20	40 ^{±1}	1.5 ^{±0.4}	250
※ VCP-22	22			
※ VCP-24	24			
※ VCP-26	26			
※ VCP-28	28			

Part No.	Dimensions (mm)			Packing unit (pieces)
	φ d	L	t	
※ VCP-30	30	50 ^{±1.5}	1.5 ^{±0.4}	250
※ VCP-32	32			
※ VCP-34	34			
※ VCP-36	36	60 ^{±1.5}	1.7 ^{±0.4}	200
※ VCP-38	38			
※ VCP-40	40			
※ VCP-42	42			
※ VCP-44	44	70 ^{±2}	2.0 ^{±0.5}	100
※ VCP-46	46			
※ VCP-48	48			
※ VCP-50	50			
※ VCP-52	52			
※ VCP-54	54	80 ^{±2}	2.0 ^{±0.5}	50
※ VCP-56	56			
※ VCP-58	58			
※ VCP-60	60			
※ VCP-62	62	90 ^{±2}	2.0 ^{±0.5}	30
※ VCP-64	64			
※ VCP-66	66			
※ VCP-68	68			
※ VCP-70	70			
※ VCP-72	72	100 ^{±2}	2.0 ^{±0.5}	20
※ VCP-74	74			
※ VCP-76	76			
※ VCP-78	78			
※ VCP-80	80			

※ Order-made (Contact us for production volume.)

Capacitor cover

Round-type/post-fit-type series



Feature

- Protective insulation cover for various capacitor bodies, wire etc.
- Best suited for double insulation.
- Effective as a barrier against active electrical parts.

Material

Soft PVC
UL recognized material (E58538):
SS107UFTT

Standard color

SS107UFTT: Blue Transparent (23)



UL recognized product E55167

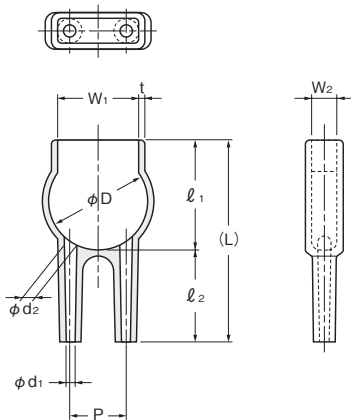
Cat. No. 12, 13, 14, 22..... Rating: 105°C, 600V



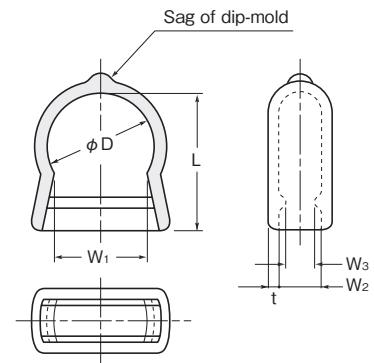
CSA recognized product LR52853 • LR52854

Cat. No. 12, 13, 14, 22..... Rating: 105°C, 600V

Round-type



Post-fit type



Round-type series Cat. No. 14

Part No.	Dimensions (mm)											ID No.	Packing unit (pieces)
	ϕD	ϕd_1	ϕd_2	P	$l_1 \pm 1$	$l_2 \pm 1$	(L)	W ₁	W ₂	$t \pm_{-0.2}^{+0.3}$			
810906	9.0	1.4	1.8	5.5	10.0	11	21.0	7.5	2.2	0.8	S 1	1,000	
811207	12.0	1.5	1.5	6.4	13.0	5	18.0	9.6	5.0	0.8	S 2		
811409	14.0	1.5	2.0	9.0	16.0	24	40.0	12.0	4.0	1.0	S 3	500	
※ 811409-1	14.0	2.0	2.0	9.0	21.0	5	26.0	12.0	4.0	1.0	S 3		
811609	16.0	1.5	2.0	9.0	18.0	15	33.0	13.0	4.0	1.0	S 4		
811810	18.0	1.5	2.0	10.0	21.0	15	36.0	14.0	4.0	1.0	S 5		
811810-1	18.0	1.5	2.2	10.0	20.0	25	45.0	14.0	3.0	1.0	S 6		
※ 811810-2	18.0	1.5	2.0	10.0	20.0	20	40.0	14.0	3.0	1.0	S 7		
※ 812010	20.0	1.4	2.0	10.0	22.0	27	49.0	17.0	5.0	1.0	S 8		
※ 812214	22.0	2.0	3.5	14.0	24.0	20	44.0	17.0	7.0	1.0	S 9		
※ 812216	22.0	2.0	3.0	16.0	27.0	15	42.0	20.0	8.0	1.0	S10		
※ 812316	23.0	1.5	3.0	16.0	28.0	10	38.0	21.0	4.5	1.0	S11		
※ 812510	25.0	2.0	2.0	10.0	28.5	10	38.5	22.0	6.0	1.0	S12		
※ 812816	28.0	2.0	3.0	15.8	35.0	20	55.0	23.0	6.0	1.0	S13		

※ Order-made (Contact us for production volume.)

Post-fit type series Cat. No. 22

Part No.	Dimensions (mm)						Packing unit (pieces)
	ϕD	W ₁	W ₂	W ₃	L ± 1	$t \pm_{-0.2}^{+0.3}$	
850830	8.0	7.5	3.0	3.0	10.5	1.0	1,000
851040	10.5	9.0	4.0	3.0	13.0		
851248	12.5	10.0	4.8	3.8	19.0		
※ 851348	13.0	11.5	4.8	3.8	19.0		
851440	14.0	12.0	4.0	3.0	16.0		
851640	16.0	13.0	4.0	3.0	18.5		

※ Order-made (Contact us for production volume.)

Capacitor cover

Square-type/Tubular-type series



INSULATION SLEEVE
FOR TERMINAL

CIRCUIT BOARD ACCESSORY

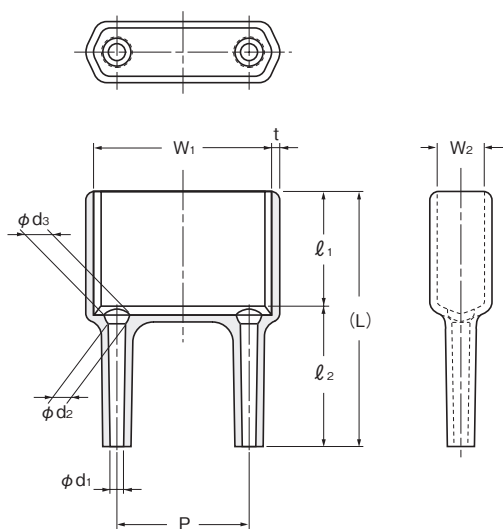
WIRING CLAMP

WIRING PROTECTOR

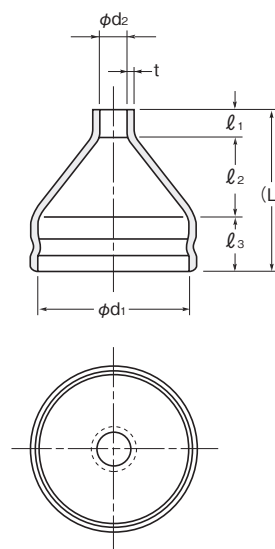
FASTENER

DIP-MOLDED PRODUCT

Square-type



Tubular-type



Square-type series Cat. No. 13

Part No.	Dimensions (mm)										ID No.	Packing unit (pieces)
	ϕd_1	ϕd_2	ϕd_3	P	$l_1 \pm 1$	l_2	(L)	W_1	W_2	$t^{+0.3}_{-0.2}$		
※ 820526	1.5	2.0	3.0	15.0	10.0	16.0 ±1.5	26.0	20.5	5.5	1.0	S31	500
※ 820536	1.3	—	3.0	6.0	14.0	22.0 ±1.5	36.0	8.0	5.0	1.0	S43	
※ 820642	1.6	—	2.4	13.0	10.0	32.0 ±1.5	42.0	17.0	6.0	1.0	S32	
820731	1.5	2.0	3.0	18.5	17.0	14.0 ±1	31.0	22.5	7.5	1.0	S33	
※ 820836	2.0	—	3.0	22.0	9.5	26.5 ±1	36.0	26.0	8.0	0.8	S34	
※ 821030	1.5	2.0	3.0	14.0	15.0	15.0 ±1	30.0	22.0	10.0	1.0	S35	
※ 821033	1.5	—	2.0	19.0	18.0	15.0 ±1	33.0	26.0	10.0	1.0	S36	
※ 821035	1.5	2.0	3.0	18.5	20.0	15.0 ±1	35.0	22.5	10.0	1.0	S37	
※ 821037	1.5	2.0	3.0	18.5	23.0	14.0 ±1	37.0	22.5	10.0	1.0	S38	
821030-1	2.5	—	2.5	28.0	27.2	3.0 ±1	30.2	35.0	10.0	1.0	S39	
※ 821135	1.5	2.0	4.0	21.0	21.0	14.0 ±1	35.0	29.0	11.0	1.0	S40	
821237	1.5	2.0	3.0	19.0	23.0	14.0 ±1	37.0	25.0	12.0	1.0	S41	
※ 821525	2.5	—	3.0	16.0	20.0	5.0 ±1	25.0	25.0	15.0	0.8	S42	
※ 820534	1.5	2.0	3.0	15.0	19.0	15.0 ±1.5	34.0	20.5	5.5	1.0	S47	
※ 820633	1.5	2.0	3.0	14.5	18.0	15.0 ±1.5	33.0	21.0	6.5	1.0	S44	
821040	1.5	2.0	3.0	14.0	13.0	27.0 ±1	40.0	22.0	10.0	1.0	S45	
※ 821232	2.0	2.0	3.0	21.0	25.0	7.0 ±1	32.0	26.0	12.0	1.0	S46	

※ Order-made (Contact us for production volume.)

Tubular-type series Cat. No. 12

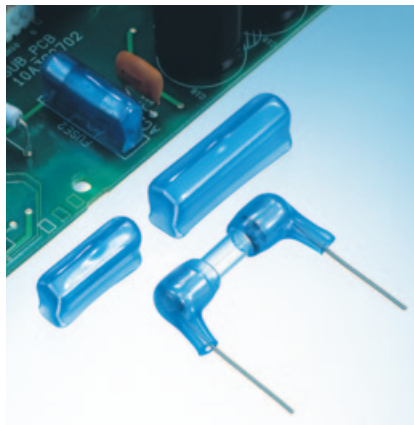
Part No.	Dimensions (mm)							ID No.	Packing unit (pieces)
	ϕd_1	ϕd_2	$l_1 \pm 1$	l_2	$l_3 \pm 1$	(L)	$t^{+0.3}_{-0.2}$		
※ 832406	24.0	6.0	5	15.0	10	30	1.0	S61	500
※ 832906	29.5	6.0	5	15.0	10	30	1.0	S62	
※ 833010	30.0	10.0	5	15.0	10	30	1.5	S63	
※ 833406	34.5	6.0	5	16.0	14	35	1.0	S64	
※ 833910	39.0	10.0	20	20.0	30	70	2.0	S65	
※ 836410	64.0	10.0	20	20.0	50	90	2.0	S66	
※ 837710	77.0	10.0	20	20.0	50	90	2.0	S67	

※ Order-made (Contact us for production volume.)

■ UL unrecognized



Fuse cover



Feature

- For protection and insulation of fuse.
- Holder type to cover the entire fuse on the P.C.B. (Fig. 1, 2)
- Excellent handling owing to wide entrance, and preventive from falling off owing to the constriction behind the mouth.
- Lead wire type to cover the metal cap and lead wire (Fig. 3)

Material

Soft PVC
UL recognized material (E58538): SS107UFTT

Standard color

SS107UFTT: Blue Transparent (23)



UL recognized product E55167

Cat. No. 15, 19..... Rating: 105°C, 600V



CSA recognized product LR52853 • LR52854

Cat. No. 15, 19..... Rating: 105°C, 600V

Fig.1

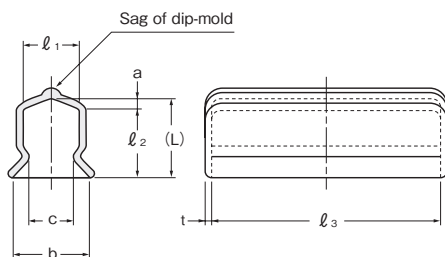


Fig.3

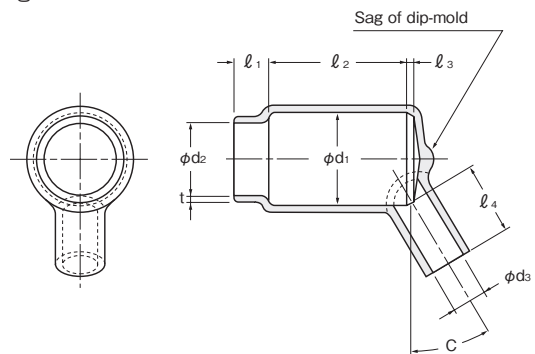
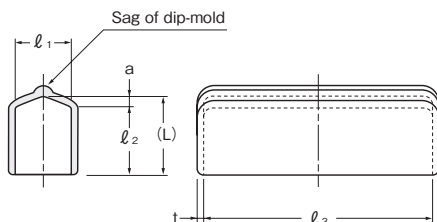


Fig.2



Cat. No. 19

Part No.	Dimensions (mm)								Fig.	Packing unit (pieces)
	l_1	$l_2 \pm 1$	l_3	(L)	a	b	c	$t \pm_{0.2}^{0.3}$		
845220A	5.2	8.5	21.5	10.0	1.5	6.2	3.8	1.0	1	1,000
846430A	6.4	10.0	32.5	11.5	1.5	7.4	5.0			
845220B	6.0	8.5	23.0	10.0	1.5	9.0	4.5			
846430B	8.0	10.0	32.5	11.5	1.5	11.0	6.5			
840522	6.0	10.0	22.0	11.5	1.5	8.0	5.0			
840620	6.0	10.0	20.0	11.5	1.5	—	—			
840622	6.0	8.0	22.5	10.0	2.0	—	—			
840730	7.0	10.0	30.0	12.0	2.0	—	—			
840832	8.0	14.1	32.0	15.5	1.5	—	—			
※ 840832-1	8.0	10.0	32.0	11.5	1.5	—	—			
840836	8.0	10.0	36.0	12.0	2.0	—	—	2		

※ Order-made (Contact us for production volume.)

Cat. No. 15

Part No.	Dimensions (mm)										Fig.	Packing unit (pieces)
	l_1	l_2	l_3	$l_4 \pm 1$	ϕd_1	ϕd_2	ϕd_3	$t \pm_{0.2}^{0.3}$	$C \pm 4^\circ$			
840610	3.0	7.0	0.5	10	7.0	6.0	1.5	0.8	23°	3	1,000	
※ 841210	5.0	20.0	2.0	10	13.5	10.5	5.0	1.0	30°			

※ Order-made (Contact us for production volume.)

■ UL unrecognized

Switch cover



INSULATION SLEEVE
FOR TERMINAL

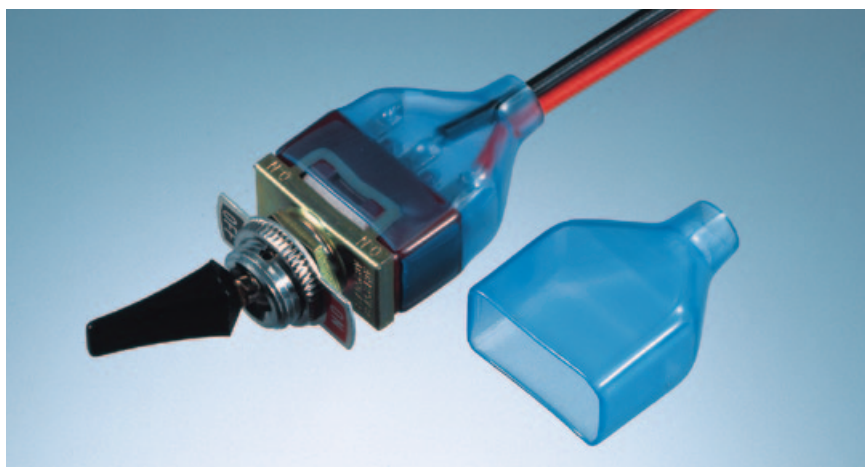
CIRCUIT BOARD ACCESSORY

WIRING CLAMP

WIRING PROTECTOR

FASTENER

DIP-MOLDED PRODUCT



Feature

- For protection of various switch and its lead wire connection from dust, moisture etc.
- Effective as a barrier against active electrical parts.

Material

Soft PVC
UL recognized material (E58538):
SS107UFTT

Standard color

SS107UFTT: Blue Transparent (23)

Fig.1

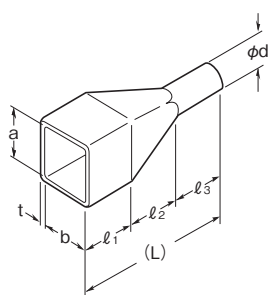
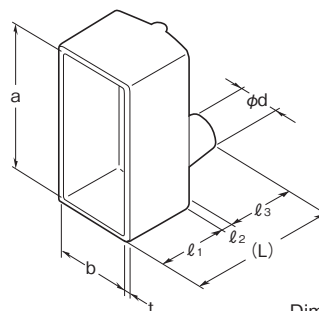


Fig.2



Dimensions are internal ones

Part No.	Dimensions (mm)									Fig.	Packing unit (pieces)
	a	b	ϕd	$l_1 \pm 1$	l_2	$l_3 \pm 1$	(L)	$t^{+0.3}_{-0.2}$			
※ 718126	18.3	12.5	6.0	13.0	20.0	10.0	43.0	1.0	1	1,000	
※ 719115	19.0	11.5	5.9×3.4	10.0	9.0	10.0	29.0	$2.2^{+0.5}_{-0.3}$			
※ 719128	19.0	12.0	8.0	23.0	10.0	6.0	39.0	1.0			
※ 720138	20.5	13.0	8.5	10.0	20.0	35.0	65.0	1.0			
※ 721126	21.5	12.0	6.0	16.5	10.0	6.0	32.5	1.0			
※ 721128	21.5	12.0	8.5	10.0	10.0	9.0	29.0	1.0			
※ 721128-1	21.5	12.0	8.5	26.0	10.0	6.0	42.0	1.0	1	500	
※ 724125	24.0	12.0	5.0	18.0	10.0	10.0	38.0	1.2			
※ 724129	24.0	12.5	9.0	18.0	15.0	10.0	43.0	1.0	2		
※ 724247	24.0	24.0	7.0	30.0	20.0	3.0	53.0	1.2	1		
※ 725100	25.0	10.0	10.0	35.0	10.0	10.0	55.0	1.2	2		
※ 725147	25.0	14.4	7.0	13.0	2.0	15.0	30.0	1.2			
※ 725148	25.0	14.8	8.5	18.5	1.5	9.5	29.5	1.2	1		
※ 725186	25.0	18.5	6.0	21.0	15.0	15.0	51.0	$1.7^{+0.3}$			
※ 727125	27.0	12.5	5.0	15.0	10.0	10.0	35.0	1.0	1		
※ 727127	27.0	12.5	7.0	20.0	10.0	10.0	40.0	1.0			
※ 727206	27.5	20.5	6.8	25.0	20.0	15.0	60.0	1.3			
※ 734165	34.6	16.2	5.0	35.0	15.0	15.0	65.0	1.3			
※ 745239	45.0	23.0	9.0	20.0	3.0	12.0	35.0	1.2	2	250	

※ Order-made (Contact us for production volume.)

Coupler cover



Feature

- Best suited for the protection of multi-electrode connector wire and cable from dust, moisture etc.
- Flexible and snug fitting to connectors, wire etc, also useful for bundling cable.

Material

Soft PVC

Standard material: SS108

UL recognized material (E58538): SS107UFTT (order-made)

SS107UFTC (order-made)

Standard color

SS108: Black (04)

Fig.1

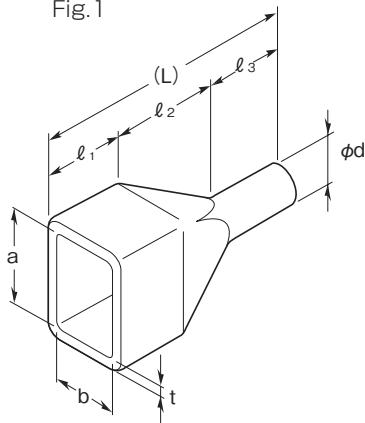


Fig.2

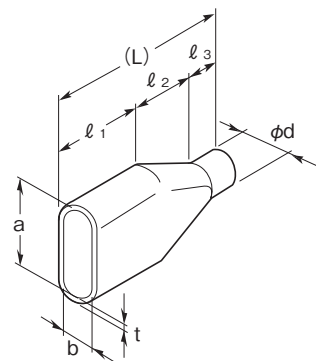


Fig.3

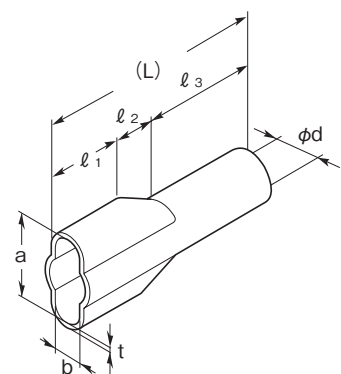


Fig.4

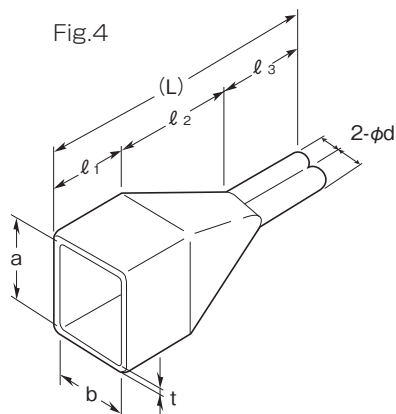
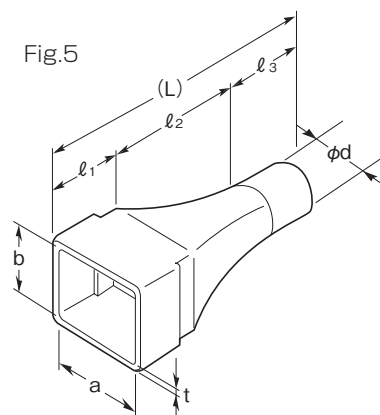


Fig.5



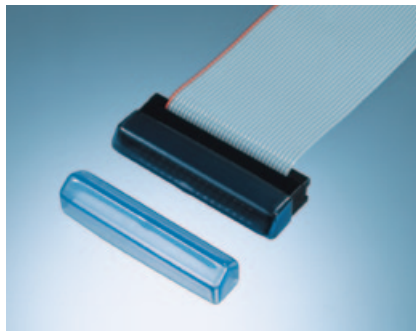
Dimensions are internal ones

Part No.	Dimensions (mm)									Fig.	ID No.	Packing unit (pieces)
	a	b	ϕd	$\ell_1 \pm 1$	ℓ_2	$\ell_3 \pm 1$	(L)	$t \pm 0.3$				
※ 510104	10.0	10.0	4.9	8.0	12.0	20.0	40.0	1.0	1	S1	1,000	
※ 511073	11.2	7.2	3.0	14.5	5.0	20.0	39.5	1.0		S2		
※ 512083	12.0	8.0	3.0	20.0	5.0	10.0	35.0	1.0		S3		
※ 512126	12.5	12.5	6.1	10.0	30.0	15.0	55.0	1.2		S4		
※ 512127	12.5	12.5	7.0	9.0	10.0	10.0	29.0	1.1		S5		
※ 512127-1	12.5	12.5	7.5	10.0	30.0	15.0	55.0	1.1		S6		
※ 512089	12.6	8.8	9.0	10.0	30.0	10.0	50.0	1.0		S7		
※ 513069	13.5	6.8	9.7	16.0	16.0	20.0	52.0	1.8		S8		500
※ 513083	13.5	8.6	3.0	22.0	5.0	20.0	47.0	1.0		S9		
※ 513066	13.6	6.4	6.0	14.0	—	31.0	45.0	1.0		S10		
※ 514118	14.0	11.0	8.5	15.0	8.0	22.0	45.0	1.0		S11		
※ 514137	14.0	13.0	7.0	10.0	8.0	17.0	35.0	1.0		S12		
※ 515094	15.4	9.0	4.8	32.0	4.0	10.0	46.0	1.0		S13		
※ 515103	10.5	15.5	3.0	14.0	22.0	14.0	50.0	1.2	4	S14		
※ 516138	16.0	13.0	8.5	12.0	10.0	23.0	45.0	1.0	1	S15	1,000	
※ 516122	16.2	12.5	12.0	9.5	15.0	20.0	44.5	1.0		S16		
※ 517065	17.0	6.0	5.5	16.0	11.0	6.0	33.0	1.5	2	S17		
※ 517065-1	17.0	6.2	5.6	14.0	—	31.0	45.0	1.0		S18		
※ 517068	17.0	6.2	8.5	14.0	21.0	10.0	45.0	1.0	S19			
※ 517077	17.0	7.5	7.0	16.0	15.0	20.0	51.0	1.0	1	S20		
※ 517166	17.0	16.0	6.0	15.0	20.0	15.0	50.0	1.2		S21		
※ 518069	18.0	6.0	9.0	15.0	8.0	22.0	45.0	1.0	3	S22		
※ 518067	18.0	6.0	7.5	15.0	8.0	22.0	45.0	1.0		S23		
※ 518139	18.2	13.6	9.0	14.0	—	31.0	45.0	1.0	5	S24		
※ 519068	19.0	6.0	8.5	17.0	13.0	20.0	50.0	1.3	1	S25		
※ 519173	19.0	17.5	13.0	14.0	16.0	20.0	50.0	1.0		S26	500	
※ 519199	19.5	19.5	9.0	15.0	10.0	20.0	45.0	1.0		S27		
※ 520077	20.0	7.5	7.0	11.0	15.0	24.0	50.0	1.5	2	S28	1,000	
※ 520128	20.0	12.5	8.5	10.0	30.0	15.0	55.0	1.2	1	S29	500	
※ 520120-1	20.0	12.5	10.0	10.0	15.0	8.0	33.0	1.2		S30		
※ 520123	20.0	12.5	13.5	9.5	15.0	20.0	44.5	1.0		S31	1,000	
※ 520120	20.0	12.5	10.0	10.0	30.0	15.0	55.0	1.2		S32		
※ 520166	16.0	20.0	6.0	15.0	20.0	15.0	50.0	1.2	4	S33	500	
※ 520126	20.5	12.0	6.0	8.0	17.0	10.0	35.0	1.0	2	S34	1,000	
※ 521095	21.0	9.0	5.5	32.0	5.0	10.0	47.0	1.0	1	—		
※ 521156	21.0	15.0	6.0	15.0	15.0	15.0	45.0	1.3		S36		
※ 521201	21.5	20.0	11.5	30.0	20.0	40.0	90.0	1.1		S37	250	
※ 522060	22.0	6.0	10.5	16.0	11.0	18.0	45.0	1.0	2	S38	1,000	
※ 522067	22.0	6.2	7.0	14.0	—	31.0	45.0	1.0		S39		
※ 522067-1	22.0	6.2	7.6	14.0	—	31.0	45.0	1.1		S40		
※ 522068	22.0	6.0	8.0	16.0	11.0	18.0	45.0	1.0		S41		
※ 522078	22.0	7.0	8.0	14.0	21.0	10.0	45.0	1.2		S42		
※ 522136	22.0	13.0	6.5	20.0	40.0	20.0	80.0	1.0		S43		500
※ 522150	22.5	15.5	10.5	10.0	15.0	10.0	35.0	1.0	1	S44	1,000	
※ 523169	23.0	16.0	9.0	17.0	13.0	10.0	40.0	1.7		S45		
※ 525197	25.6	19.0	7.2	10.0	35.0	20.0	65.0	1.2	5	S46	500	
※ 526077	26.0	7.5	7.0	11.0	15.0	24.0	50.0	1.5	2	S47	1,000	
※ 526078	26.0	7.5	8.0	12.0	15.0	23.0	50.0	1.5	1	S48		
※ 527163	27.0	16.0	13.0	18.0	17.0	10.0	45.0	1.0		S49	500	
※ 527195	27.0	19.0	5.0	30.0	5.0	10.0	45.0	1.0	1	S50	1,000	
※ 528117	28.0	11.0	7.0	14.0	12.0	18.0	44.0	1.0		S51		
※ 528217	28.2	21.6	7.2	10.0	35.0	20.0	65.0	1.2	5	S52	500	
※ 528083	28.2	8.2	13.0	12.0	15.0	15.0	42.0	1.0	S53			
※ 529216	29.0	21.0	6.0	25.0	15.0	10.0	50.0	1.2	S54			
※ 530206	30.0	20.0	6.0	18.0	7.0	8.0	33.0	1.0	1	S55	1,000	
※ 531186	31.0	18.0	6.0	35.0	5.0	10.0	50.0	1.0		S56	250	
※ 532129	32.0	12.0	9.2	7.0	13.0	30.0	50.0	1.0		S57	500	
※ 532201	32.0	20.0	11.0	24.0	22.0	10.0	56.0	1.3		S58	250	
※ 533110	33.0	11.0	10.2	16.5	17.0	15.5	49.0	1.2		S59	500	
※ 535120	35.0	12.0	10.0	7.0	13.0	30.0	50.0	1.0		S60		
※ 500258	100.0	25.0	8.0	40.0	10.0	20.0	70.0	1.2		S61	100	

※ Order-made (Contact us for production volume.)

Dust cover

DC series



Feature

- For protection of connectors from dust, moisture etc prior to the installation.
- Best suited at a time of transport and storage.

Material

Soft PVC
 Standard material: SS108
 UL recognized material (E58538): SS107UFTT

Standard color

SS107UFTT: Blue Transparent (23)



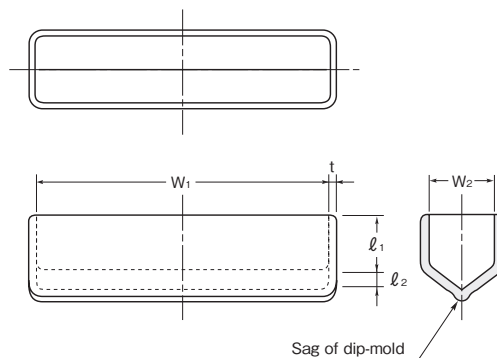
UL recognized product E55167

Cat. No. 19..... Rating: 105°C, 600V



CSA recognized product LR52853 • LR52854

Cat. No. 19..... Rating: 105°C, 600V



Part No.	Dimensions (mm)					Packing unit (pieces)
	W ₁	W ₂	l ₁ ± 1	l ₂	t ± _{0.2} ^{0.3}	
※ ■ DC-1204	12.0	4.5	8.0	0.7	1.0	1,000
※ ■ DC-1306	13.7	6.0	5.0	2.0	1.0	
※ Ⓢ DC-1504	15.6	4.5	5.5	2.0	1.0	
※ Ⓢ DC-2006	20.0	6.0	11.0	1.5	1.0	
※ Ⓢ DC-2013	20.0	13.0	8.5	3.0	1.0	
※ Ⓢ DC-2508	25.0	8.5	10.5	1.5	1.0	
※ Ⓢ DC-2520	25.0	20.0	8.5	3.0	1.0	
※ Ⓢ DC-2716	27.0	16.0	10.0	2.0	1.2	
※ ■ DC-3025	30.0	25.0	10.5	2.5	1.2	
※ Ⓢ DC-3605	36.0	5.0	6.0	1.0	1.0	
※ ■ DC-4007	40.0	7.0	31.0	2.0	1.0	
※ Ⓢ DC-4103	41.4	3.0	6.4	2.0	1.0	
※ Ⓢ DC-4114	41.0	14.0	22.0	2.0	1.0	
※ Ⓢ DC-4304	43.0	4.9	6.0	1.0	1.0	
※ Ⓢ DC-4308	43.5	8.0	6.6	1.0	1.0	
※ Ⓢ DC-4317	43.0	17.5	10.0	3.0	1.0	
※ Ⓢ DC-4416	44.0	16.8	22.0	2.5	1.2	
※ ■ DC-4807	48.0	7.0	31.0	2.0	1.0	
※ Ⓢ DC-4819	48.0	19.0	14.0	3.0	1.0	
※ ■ DC-5222	52.5	22.0	20.0	3.0	1.0	
※ DC-5312	53.7	12.5	9.5	1.5	1.0	
※ DC-5410	54.3	10.0	8.0	3.0	1.0	
※ DC-6110	61.3	10.5	4.3	1.0	1.0	
※ ■ DC-6307	63.0	7.0	31.0	2.0	1.0	
※ DC-6405	64.5	5.9	10.5	1.0	1.0	
※ ■ DC-6522	65.0	22.0	13.0	2.0	1.2	
※ DC-7106	71.5	6.0	6.0	1.5	1.0	
※ ■ DC-7225	72.0	25.0	25.0	2.0	1.5	
※ DC-7310	73.2	10.8	8.7	1.5	1.0	
※ ■ DC-7342	73.0	42.0	25.0	3.0	1.5	
※ ■ DC-7921	79.4	21.4	9.0	1.5	1.0	
※ DC-8009	80.6	9.0	5.0	1.5	1.0	
※ DC-8506	85.0	6.0	6.0	1.5	1.0	
※ DC-8608	86.0	8.0	7.0	1.5	1.0	
※ DC-9012	90.0	12.5	10.0	2.0	1.0	
※ DC-9020	90.0	20.0	14.0	3.0	1.0	
※ DC-9310	93.6	10.8	10.2	1.5	1.0	
※ ■ DC-1161	116.0	11.7	5.0	1.5	1.0	

※ Order-made (Contact us for production volume.)

Ⓢ CSA unrecognized product

■ UL unrecognized

INSULATION SLEEVE FOR TERMINAL

CIRCUIT BOARD ACCESSORY

WIRING CLAMP

WIRING PROTECTOR

FASTENER

DIP-MOLDED PRODUCT

Dust cover (for D-sub)

P/R series



Feature

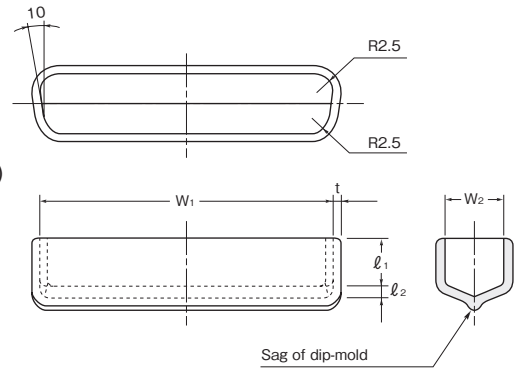
- For protection of D-type sub miniature connector from dust, moisture etc prior to installation.

Material

Soft PVC
UL recognized material
(E58538): SS107UFTT

Standard color

SS107UFTT: Blue Transparent (23)



UL recognized product E55167

Cat. No. 19..... Rating: 105°C, 600V



CSA recognized product LR52853 • LR52854

Cat. No. 19..... Rating: 105°C, 600V

Part No.	Dimensions (mm)					Packing unit (pieces)
	W ₁	W ₂	l ₁ ± 1	l ₂	t ± 0.3 / -0.2	
Ⓢ P- 9P	16.4	7.8	6.2	1.5	1.0	1,000
Ⓢ P-15P	24.6	7.8	6.2			
Ⓢ P-25P	38.3	7.8	6.2			
※ P-37P	54.8	7.8	6.2	2.0		
※ P-50P	52.4	10.6	6.2			
Ⓢ R- 9P	17.7	9.2	6.0	2.0		
Ⓢ R-15P	26.0	9.2	6.0			
Ⓢ R-25P	40.0	9.4	5.9			
※ R-37P	56.7	9.6	5.9			
※ R-50P	54.0	12.3	5.9			

※ Order-made (Contact us for production volume.)

Ⓢ CSA recognized product

Flat cable cover



Feature

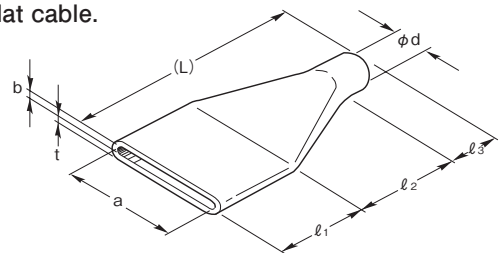
- For protection and bundling of flat cable.
- Flexible and snug fitting to flat cable.

Material

Soft PVC
Standard material: SS108

Standard color

SS108: Black (04)



Part No.	Dimensions (mm)							Packing unit (pieces)
	a	b	φ d	l ₁ ± 1	l ₂	l ₃	(L)	
※ 612157	12.0	1.5	7.5	8	25.0	23.0	56	1,000
※ 626039	26.0	2.5	10.2	10	14.0	10.0	34	
※ 633018	33.0	1.1	8.7	18	32.0	15.0	65	
※ 638019	38.5	1.0	9.0	20	24.0	15.0	59	
※ 638013	38.5	1.0	13.0	30	17.0	15.0	62	
※ 642021	42.0	2.5	11.5	10	31.0	24.0	65	
※ 643019	43.0	1.1	9.7	18	22.0	15.0	55	
※ 651023	51.0	2.5	13.0	25	10.0	15.0	50	
※ 654011	54.0	1.3	11.2	24	32.0	15.0	71	
※ 663025	63.5	2.5	15.0	25	10.0	15.0	50	
※ 664012	64.0	1.3	12.2	24	32.0	15.0	71	500
※ 674025	74.5	2.5	15.5	25	15.0	15.0	55	

※ Order-made (Contact us for production volume.)

Insulation cover for bus bar

IC/BS series

Feature

- Insulation cover for bus bar connecting points.
- IC series fits I-shaped, L-shaped and T-shaped bus bar connecting points.

Material

Soft PVC
 UL recognized material (E58538):
 SS107UFTC

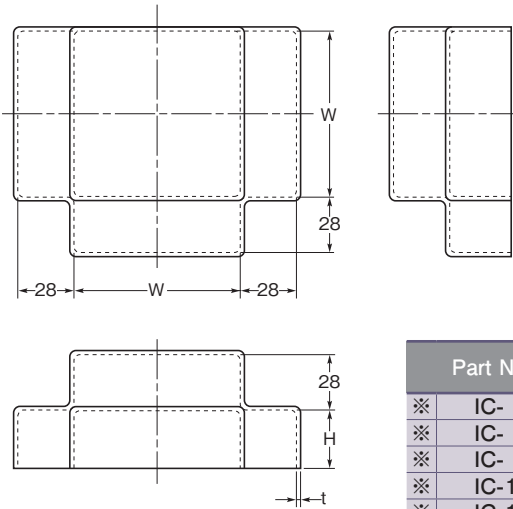
Standard color

SS107UFTC: Black (04)



Example of bus bar cover

IC series

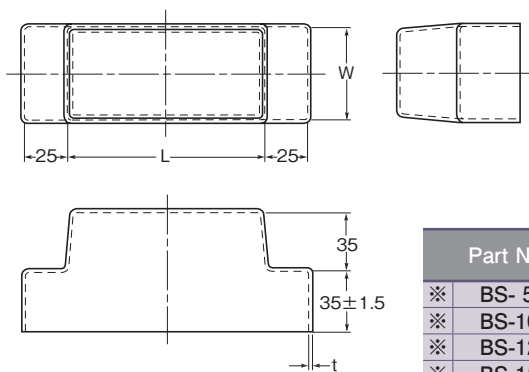


Part No.	Dimensions (mm)			ID No.
	W	H ± 1.5	t ± 0.5	
※ IC- 30	34	10	2.0	S6
※ IC- 50	54	10		S1
※ IC- 75	84	30		S2
※ IC-100	104	30		S3
※ IC-150	154	30		S4
※ IC-200	204	30		S5

(Dimensions are internal ones)

※ Order-made (Contact us for production volume.)

BS series



Part No.	Dimensions (mm)			ID No.
	W	L	t ± 0.5	
※ BS- 50B	54	115	2.0	S25
※ BS-100B	104	205		S21
※ BS-125B	129	255		S22
※ BS-150B	154	305		S23
※ BS-200B	204	405		S24

(Dimensions are internal ones)

※ Order-made (Contact us for production volume.)

Shield cap



Feature

- Insulation cap that spread the core wire into shield wire.
- No need for heat shrinking.
- Available in straight type and two-pronged type.

Material

Soft PVC

Standard material: SS108

UL recognized material (E58538): SS107UFTC

Standard color

Straight type SS108: Black (04), transparent (09)

 SS107UFTT: Blue transparent (23)

Two-pronged type SS108: Transparent (09)

 SS107UFTT: Blue transparent (23)



UL recognized product **E55167**

Cat. No. 2, 6 (Straight type)

 4, 8 (Two-pronged type)

SS107UFTT..... Rating: 105°C, 300V



CSA recognized product **LR52853 • LR52854**

Cat. No. 2, 6 (Straight type)

 4, 8 (Two-pronged type)

SS107UFTT..... Rating: 105°C, 300V

Straight type



Fig.1

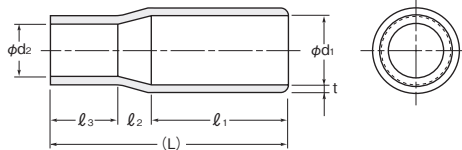
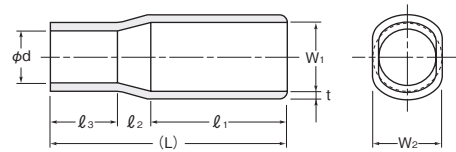


Fig.2



Cat. No. 2

Part No.	Dimensions (mm)							Fig.	Packing unit (pieces)
	ϕd_1	ϕd_2	$l_1 \pm 1$	l_2	$l_3 \pm 1$	(L)	$t^{+0.3}_{-0.2}$		
■ 312309	2.3	0.8	6.0	2.0	4.0	12	0.6	1	1,000
■ 312314	2.3	1.4	7.0	2.0	11.0	20			
■ 312715	2.7	1.5	8.5	0.5	2.0	11			
■ 313015	3.0	1.5	11.0	1.0	3.0	15			
■ 313020	3.0	2.0	10.0	1.0	3.0	14			
■ 313314	3.3	1.4	11.0	1.0	5.0	17	0.8		
■ 313320	3.3	2.0	7.0	2.0	11.0	20			
■ 313525	3.5	2.5	8.0	2.0	3.0	13			
■ 314420	4.4	2.0	13.0	3.0	6.0	22			
■ 314428	4.4	2.8	14.0	1.0	6.0	21			
■ 315131	5.1	3.1	10.0	1.0	4.0	15	1.0		
■ 315228	5.2	2.8	14.0	1.0	6.0	21			
※ ■ 315242	5.2	4.2	20.0	1.0	14.0	35			
■ 315530	5.5	3.0	12.0	1.0	2.0	15			
■ 316228	6.2	2.8	15.0	2.0	7.0	24			
■ 317045	7.0	4.5	13.0	1.5	2.5	17	1.0		
■ 317240	7.2	4.0	16.0	1.0	8.0	25			
■ 318665	8.6	6.5	20.0	2.0	13.0	35			

※ Order-made (Contact us for production volume.)

■ UL/CSA unrecognized

Cat. No. 6

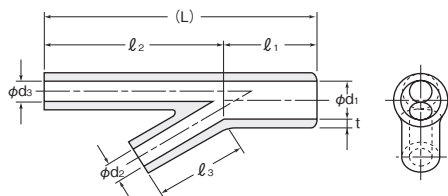
Part No.	Dimensions (mm)							Fig.	Packing unit (pieces)	
	W_1	W_2	ϕd	$l_1 \pm 1$	l_2	$l_3 \pm 1$	(L)			
■ 322315	2.3	1.5	1.5	8	1.0	3	12	0.6	2	1,000
※ ■ 322418	2.4	2.0	1.8	10	2.0	3	15	0.6		
■ 323215	3.2	2.4	1.5	8	2.0	5		0.8		
※ ■ 324020-1	4.0	2.1	2.0	10	2.0	3		0.6		
※ ■ 324020	4.0	2.3	2.0	10	2.0	3		0.8		
※ ■ 324125	4.1	2.4	2.5	8	2.0	5		0.8		
■ 324332	4.3	3.7	3.2	8	2.0	5		0.8		

※ Order-made (Contact us for production volume.)

Two-pronged type



Fig.3



Cat. No. 4

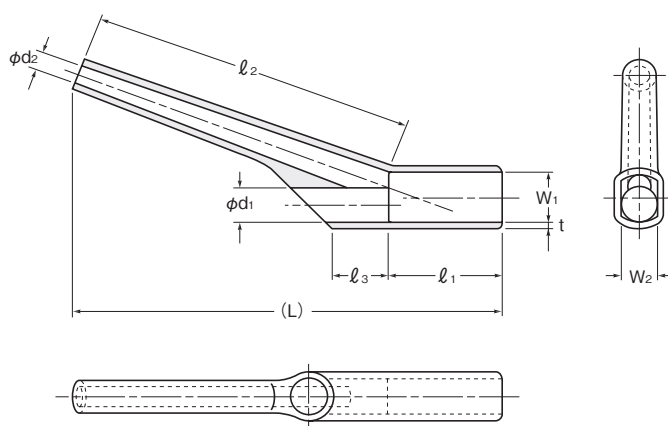
Part No.	Dimensions (mm)							Fig.	Packing unit (pieces)	
	ϕd_1	ϕd_2	ϕd_3	$l_1 \pm 1$	$l_2 \pm 1$	$l_3 \pm 1.5$	(L)			
■ 334525	4.5	2.5	1.5	10	30	10.0	40	0.8	3	1,000
■ 335032	5.0	3.2	1.5	20	15	15.0	35	1.0		
■ 335530	5.5	3.0	3.0	13	15	12.0	28			
■ 335830	5.8	3.0	3.0	20	40	40.0	60			
■ 336235	6.2	3.5	2.5	15	30	15.0	45			
※ ■ 339030	9.0	3.0	3.0	13	15	12.0	28			

※ Order-made (Contact us for production volume.)



Two-pronged type

Fig.4



Cat. No. 8

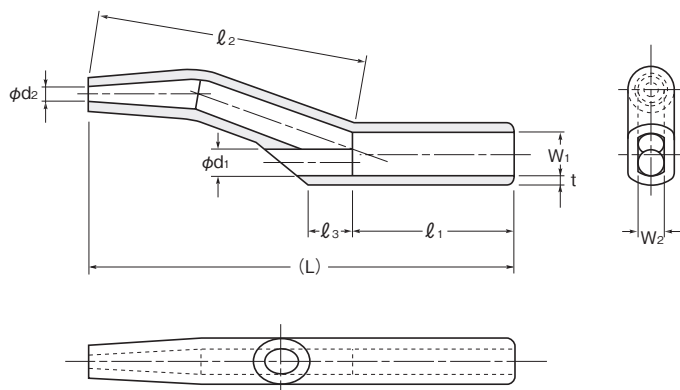
Part No.	Dimensions (mm)									Fig.	Packing unit (pieces)
	W ₁	W ₂	φ d ₁	φ d ₂	l ₁ ± 1	l ₂ ± 1	l ₃ ± 1.5	(L)	t ^{+0.3} _{-0.2}		
342316	2.3	1.6	1.6	1.5	7	30	3.0	37	0.6	4	1,000
※ 342618	2.6	1.8	1.8	1.5	10	25	4.0	35			
※ 342615	2.6	2.0	1.5	1.5	10	30	5.0	40			
※ 343218	3.2	2.3	1.8	1.3	10	30	10.0	40			
※ 343220	3.2	2.3	2.0	1.4	10	30	7.0	40	0.8		
343120	3.1	2.0	2.0	2.0	7	30	4.0	37			
※ 343215	3.2	2.4	1.5	1.5	8	32	4.0	40			
※ 343525	3.5	2.5	2.5	2.0	12	30	8.0	42			
※ 343525-1	3.5	2.5	2.5	1.5	10	30	8.0	40			
※ 344023	4.0	2.3	2.3	1.5	10	25	4.0	35			
344125	4.1	2.4	2.5	1.5	8	30	6.0	38			
344325	4.3	3.7	2.5	1.5	8	32	4.0	40			

※ Order-made (Contact us for production volume.)

Two-pronged type For housing



Fig.5



Cat. No. 8

Part No.	Dimensions (mm)									Fig.	Packing unit (pieces)
	W ₁	W ₂	φ d ₁	φ d ₂	l ₁ ± 1	l ₂ ± 1	l ₃ ± 1.5	(L)	t ^{+0.3} _{-0.2}		
※ 352313	2.3	1.8	1.3	0.7	8	15	3.5	23	0.6	5	1,000
※ 352417	2.4	2.0	1.7	0.8	10	15	3.5	25			
※ 352417-1	2.4	2.0	1.7	0.8	10	20	3.5	30			
※ 352417-2	2.4	2.0	1.7	0.8	10	25	3.5	35			
※ 352417-3	2.4	2.0	1.7	0.8	10	30	3.5	40			
※ 354023	4.0	2.1	2.3	0.8	10	20	3.5	30			
※ 354023-1	4.0	2.1	2.3	0.8	10	25	3.5	35			
■ 354023-2	4.0	2.1	2.3	0.5	10	30	3.5	40			

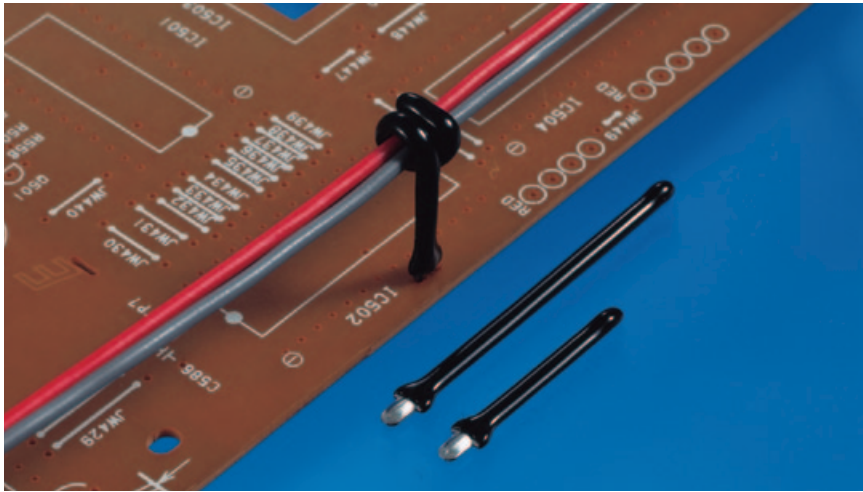
※ Order-made (Contact us for production volume.)

■ UL/CSA unrecognized



Coated clip

CP series



Feature

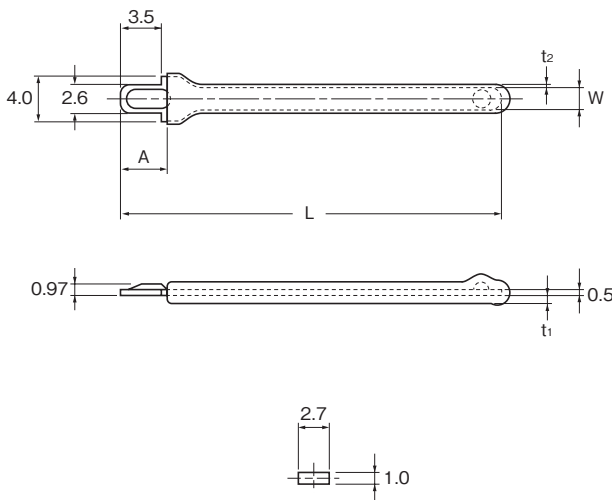
- Insulated clip, coated with the soft PVC, are best suited for fixing small wiring on P.C. Board.
- Secure the wire at the desired position.
- Clip's projection at the bottom prevent from tipping during soldering process.
- Can be secured by soldering at the same time as the other board components.

Material

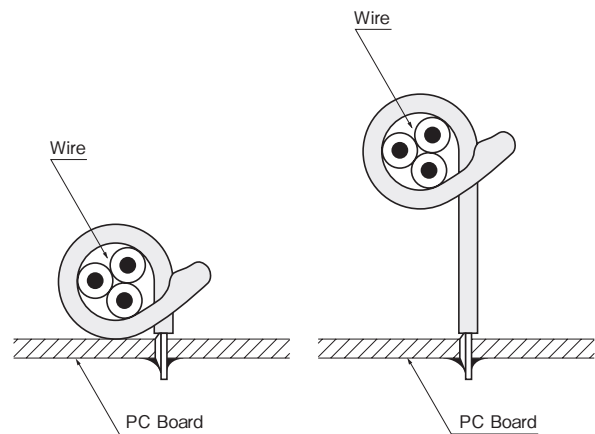
Tin-plated steel sheet: $t = 0.5$ mm
 Soft PVC
 UL recognized material (E58538):
 SS107UFTT

Standard color

Black (34)



Mounting dimensions



Part No.	Dimensions (mm)					Packing unit (pieces)
	$A_{\pm 0.5}^{+1}$	W	L	$t_1_{\pm 0.2}^{+0.4}$	t_2	
CP-1S	4	2.0	50	0.7	0.2 or more	500
CP-2S			30			

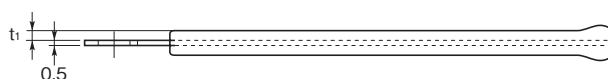
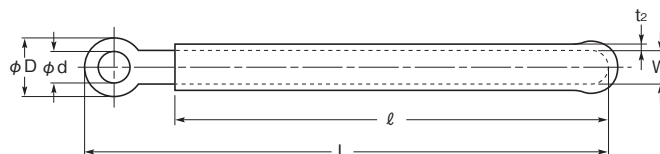
● Mounting hole: 1.0 × 2.7 (Square hole)

Coated clip CS series



Feature

- Insulated clip, coated with the soft PVC, are best suited for fixing small wiring on P.C. Board.
- Secure the wire at the desired position.
- Shall be secured with screw.



Material

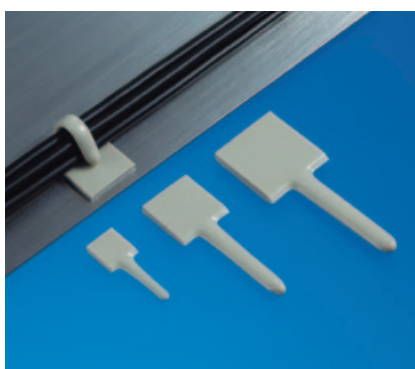
Chrome-free galvanized steel sheet:
t = 0.5 mm
Soft PVC
Standard material: SS108
UL recognized material (E58538):
SS107UFTT

Standard color

SS108: Black (04)
SS107UFTT: Black (34)

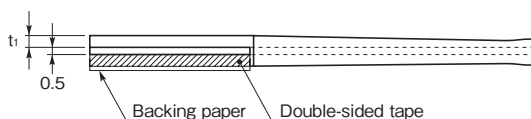
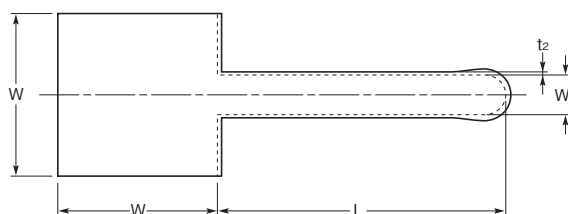
Part No.		Dimensions (mm)							Packing unit (pieces)
Standard material	Material	ϕD	ϕd	W	l	L	$t_1 \pm 0.5$	t_2	
CS-1	CS-1U	6.0	3.3	3.5	45	54	1.0	2.0 or more	500
CS-2	CS-2U	8.0	3.3	3.5	30	41			
CS-3	CS-3U	8.0	3.3	3.5	45	56			
CS-4	CS-4U	8.0	3.3	4.5	55	66			
CS-5	CS-5U	8.0	4.4	4.5	45	56			
CS-6	CS-6U	8.0	4.4	4.5	55	66			
CS-7	CS-7U	8.0	4.4	4.5	65	76			
CS-8	CS-8U	8.0	3.3	3.0	49	60			
CS-9	CS-9U	8.0	3.5	5.0	22.5	34.5			

Coated clip CA series



Feature

- Insulated clip, coated with the soft PVC, are best suited for fixing small wiring on P.C. Board.
- Secure the wire at the desired position.
- Come with double-sided tape.



Material

Chrome-free galvanized steel sheet:
t = 0.5 mm
Soft PVC: SS108 Flame-retardant

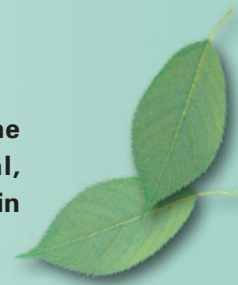
Standard color

Ivory

Part No.	Dimensions (mm)					Packing unit (pieces)
	W	W ₁	L	$t_1 \pm 0.5$	t_2	
CA- 8	8.0	2.1	15	1.0	0.2 or more	100×10=1000
CA-14	14.0	3.5	25			50×10=500
CA-19	19.0	4.0	30			50×10=500

Introduction of PB-free product.

Based on our policy "environmental friendly", we have newly developed the soft acrylic resin sol compound. This acrylic sol is halogen free material, recognized by UL (UL94V-0), has been highly evaluated as PB-free material in the market.

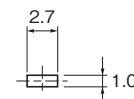
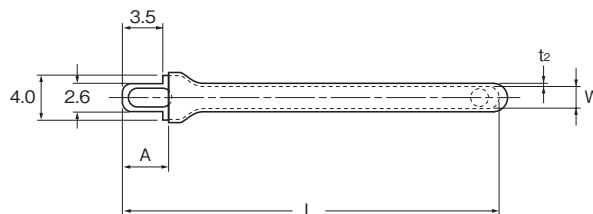


Coated clip CP-SA series



Feature

- Insulated clip, coated with newly developed acrylic sol, are best suited for fixing small wiring.
- Can be secured by soldering at the same time as the other board components.



Mounting dimensions



Material

Tin-plated steel sheet: $t = 0.5$ mm
Soft Acrylic
UL recognized material (E58538):
Envaplus SD-C3

Standard color

Blue

Part No.	Dimensions (mm)					Packing unit (pieces)
	$A \pm 0.5$	W	L	$t_1 \pm 0.4$	t_2	
CP-1SA	4	2.0	50	0.7	0.2 or more	500
CP-2SA			30			

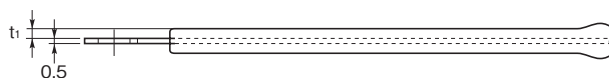
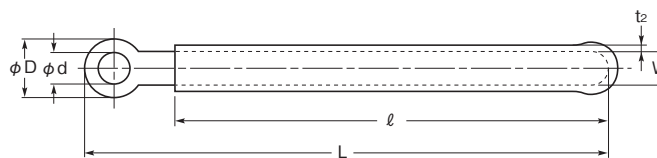
● Mounting hole: 1.0×2.7 (Square hole)

Coated clip CS-A series



Feature

- Insulated clip, coated with newly developed acrylic sol, are best suited for fixing small wiring.
- Can be secured with screw.



Material

Chrome-free galvanized steel sheet:
 $t = 0.5$ mm
Soft Acrylic
UL recognized material (E58538):
Envaplus SD-C3

Standard color

Blue

Part No.	Dimensions (mm)						Packing unit (pieces)	
	ϕD	ϕd	W	l	L	$t_1 \pm 0.5$		t_2
CS-1A	6.0	3.3	3.5	45	54	1.0	0.2 or more	500
CS-2A	8.0	3.3	3.5	30	41			
CS-5A	8.0	4.4	4.5	45	56			
CS-6A	8.0	4.4	4.5	55	66			
CS-7A	8.0	4.4	4.5	65	76			